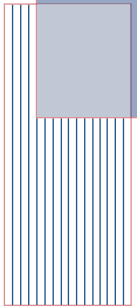
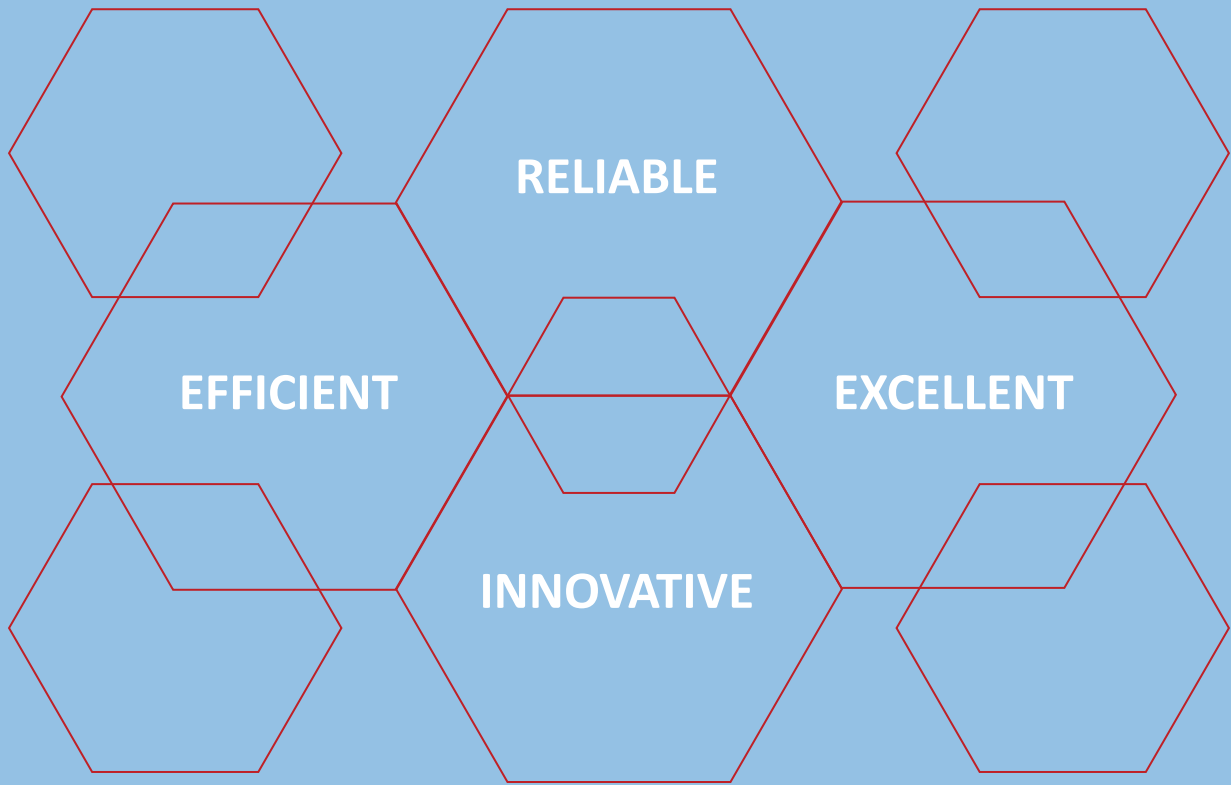


**LIESOL**®  
LIGHT • ENERGY • SOLUTION

PRODUCT CATALOG





## COMPANY PROFILE

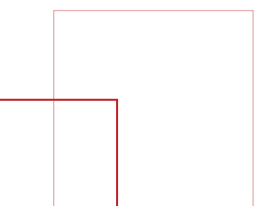
LIESOL lighting is a LED manufacturer, distribution and consultation company. Our focus is entirely on reliable, high quality, high efficiency, and cost-effective products. We design solution-oriented packages around each client's particular goals using a combination of industry experiences, manufacturing partnerships, and logistical capabilities.

## OUR VISION

LIESOL is designed to be a leading energy solution provider, to assist institutions across the region in building sustainable green businesses.

## OUR MISSION

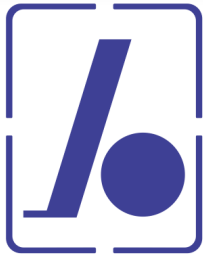
LIESOL is committed to the quality of products, excellent services, and the satisfaction of the clients.



# CLIENTS



**KEMENTERIAN  
PEKERJAAN UMUM DAN  
PERUMAHAN RAKYAT**



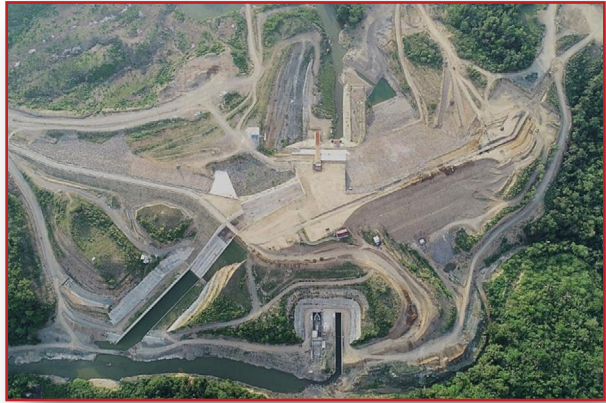
*barata indonesia*



**EMERALD LAND  
DEVELOPMENT**



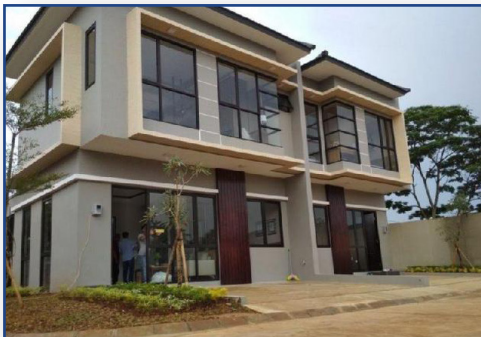
Rumah Sahabat Keluarga



Bendungan Paselloreng



Sukamantri Biz Center



Emerald Terrace



Emerald Garden

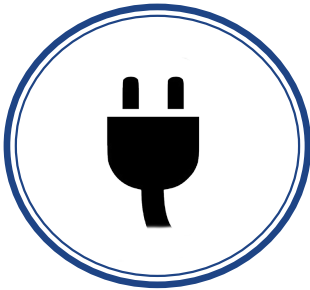


Bumi Karang Indah



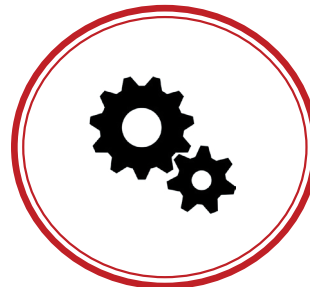
## LED Retrofit Management

The prospect of converting and upgrading to LED lighting can be a daunting one. It is vital to have a firm understanding of the existing lighting conditions, and an even greater understanding of the desired outcome of a project.



## New & Replacement LED Products

LIESOL lighting is your single source supplier for LED lighting products. As a national distributor of LED lighting solutions, we are able to leverage our purchasing power to provide our customers with cost-effective and competitively-priced LED lighting products.



## Design & Performance Consulting

The team at LIESOL lighting has a unique combination of industry experience, manufacturer partnerships, logistical capability, and a passion for finding the best lighting solutions for our clients.



## Construction & Renovation Services

For construction and renovation projects, we focus on helping our customers manage the process of obtaining the right products for the right projects at the right price.

## Retail and Hospitality



Keeping an eye on bottom line without compromising your customer's experience is our objective in the Hospitality and Retail market. Competitively-priced LED lighting products are an excellent way to reduce operating costs while improving the performance of the lighting in your facility.

## Schools & Universities

Educational facilities must balance tight budgets with creating a safe, efficient environment for their students. LIESOL lighting has the experience to provide the best solutions available, whether it is a single classroom, or a district - wide retrofit.



## Municipal & Government



Be a leader in your community by converting to LED lighting. Organizations such as Townships, Boroughs, Cities, Counties, Authorities and Correctional Facilities are constantly looking for ways to provide sustainable solutions to their communities.

# CUSTOMER TYPES

## Hospital or Medical Facilities

Organizations in the Health Care field are constantly looking for ways to improve their patient experience, while simultaneously trying to keep operating costs as low as possible. Lighting upgrades provide the ideal opportunity to improve a facility's performance and significantly reduce energy and maintenance costs.



## Real Estate Organizations



Companies that own, operate, or manage real estate assets are always looking for ways to keep their facilities and properties as efficient as possible. An LED lighting retrofit not only helps improve sustainability, but positively affects your bottom line through a reduction in operating costs.

## Contractors

Competitive Pricing. Excellent Performance. Responsive Service. Let LIESOL lighting supply the LED lighting products on your next project to save money, time, and avoid headaches. Not sure which products you need? Let us provide solutions-based options.





Energy Service Companies



Lighting upgrades are just one of many services that ESCOs provide their customers. LIESOL lighting can make the process of implementing LED products more effective by making sure that you have the best options available to achieve cash flow objectives and energy/maintenance requirements needed for your project.

Architects and Engineers

Need assistance in the design of a lighting project or some product options to help with your required energy analysis? LIESOL Lighting's team of Lighting Experts will provide the product options to ensure that your customer's objectives are achieved.



Facility or Building Owner/Manager



Looking for ways to reduce and maintenance costs at your facility? LED retrofit projects provide the perfect opportunity to reduce your operating costs while improving the lighting performance for your employees or customers. Ask us how we can help make your facility more efficient.

# CONTENTS



# CONTENTS

|                                    |                               |
|------------------------------------|-------------------------------|
| COMPANY PROFILE                    | 02-04                         |
| 05-08                              | SERVICES & CUSTOMERS TYPES    |
| STREET LIGHT                       | 11-16                         |
| 17-18                              | ALL-IN-ONE SOLAR STREET LIGHT |
| MINI ALL-IN-ONE SOLAR STREET LIGHT | 19-20                         |
| 21-22                              | INTEGRATED SOLAR STREET LIGHT |
| FLOOD LIGHT                        | 23-26                         |
| 27-32                              | HIGHBAY LIGHT                 |
| EXPLOSIVE PROOF LIGHT              | 33-36                         |
| 37-38                              | GAS STATION LIGHTING          |
| MARINE LIGHT                       | 39-40                         |
| 41-42                              | FISHING UNDERGROUND LIGHT     |
| STADIUM LIGHTING                   | 43-46                         |
| 47-48                              | AIRPORT LIGHTING              |
| PROJECTOR LIGHT                    | 49-50                         |
| 51-54                              | WALL WASHER                   |
| DOWNLIGHT                          | 55-58                         |
| 59-62                              | PANEL LIGHT                   |
| PANEL DOWNLIGHT                    | 63-64                         |
| 65-66                              | LINEAR LIGHT                  |
| TRACK LIGHT                        | 67-70                         |
| 71-74                              | TUBE LIGHT                    |
| STRIP LIGHTING                     | 75-78                         |
| 79-82                              | LANDSCAPE LIGHTING            |
| BOLLARD LIGHTING                   | 83-85                         |

# STREET LIGHT

Absorbing the inspiration and power from universe, this all in one solar-powered LED street light covers an optimal combination of green energy. It integrated with micro controller, PIR sensor and other controlling technologies. All in one structure enables brighter effect at low power, long lifespan, maintenance free, and convenient installation. LED street light, designed by experienced expert and controlled by strict quality system, integrate enduring structure and perfect design to keep its lifespan long, energy consumption low and costs down, meet a vast majority of challenging roadway and street lighting applications and optimize its lighting performance beyond the previous products.



## Product Features

- 💡 Honeycomb briquette effect heat dissipation principle, best thermal management system.
- 💡 Designed to last at least 60,000 hours at L70.
- 💡 Optional installation.
- 💡 Multiple housing colors: black, white, grey, blue.
- 💡 Easy tool on site maintenance and repair.

## Specifications

- 💡 Wide power range : 30W - 480W
- 💡 Color Rendering Index (CRI) : 70
- 💡 IP Rating : IP68
- 💡 Material : Die cast aluminum
- 💡 Certifications : CE, Rohs, CB



## Applications

- 💡 Street, highway, pathway, road, sidewalk, factories, schools, gardens, courtyard, parks, etc...



## Product Features

- 💡 Honeycomb briquette effect heat dissipation principle, best thermal management system.
- 💡 Designed to last at least 60,000 hours at L70.
- 💡 Optional installation.
- 💡 Multiple housing colors: black, white, grey, blue.
- 💡 Easy tool on site maintenance and repair.

## Specifications

- 💡 Wide power range : 40W - 420W
- 💡 Color Rendering Index (CRI) : 70
- 💡 IP Rating : IP68
- 💡 Material : Die cast aluminum
- 💡 Certifications : CE, Rohs, CB



## Applications

- 💡 Street, highway, pathway, road, sidewalk, factories, schools, gardens, courtyard, parks, etc...



## Product Features

- 💡 Detachable modular design, easy to maintain and repair.
- 💡 Patent design and sophisticated design.
- 💡 Easy tool on site maintenance and repair.
- 💡 High quality material and LED chips.

## Specifications

- 💡 Wide power range : 60W - 300W
- 💡 Color Rendering Index (CRI) : 80
- 💡 IP Rating : IP65
- 💡 Material : Aluminum Alloy + PC
- 💡 Certifications : CE,EMC,FCC,LVD,RoHS



## Applications

- 💡 Street, highway, pathway, road, sidewalk, factories, schools, gardens, courtyard, parks, etc...



## Product Features

- 💡 Rotateable max to 90 degrees.
- 💡 Patent and compact design.
- 💡 Easy tool on site maintenance and repair.
- 💡 Energy-saving. Environmental friendly.

## Specifications

- 💡 Wide power range : 100W & 150W
- 💡 Color Rendering Index (CRI) : 80
- 💡 IP Rating : IP65
- 💡 Material : Aluminum Alloy + PC
- 💡 Certifications : CE,EMC,FCC,LVD,RoHS



## Applications

- 💡 Street, highway, pathway, road, sidewalk, factories, schools, gardens, courtyard, parks, etc...





## Product Features

- ⚡ Advance optical design, extraordinary uniformity of brightness.
- ⚡ The housing is with compact appearance and light in weight, which will lessen transportation cost.
- ⚡ Energy-saving. Environmental friendly.
- ⚡ Easy tool on site maintenance and repair.

## Specifications

- ⚡ Wide power range : 30W - 120W
- ⚡ Color Rendering Index (CRI) : 80
- ⚡ IP Rating : IP65
- ⚡ Material : Aluminum Alloy + PC
- ⚡ Certifications : CE,EMC,FCC,LVD,RoHS



## Applications

- ⚡ Street, highway, pathway, road, sidewalk, factories, schools, gardens, courtyard, parks, etc...



# ALL - IN - ONE SOLAR STREET LIGHT

The integrated solar street light is an intelligent outdoor lighting system that integrates the best energy saving parts solar panel, led lamp ,sensor, controller and lithium battery all in one box. During the day the highly efficient solar panel collects energy from the sun and stores the power in the advanced lithium battery. At night the powerful LED would automatically be turned on providing light. When motion is detected, the LED would increase in brightness to provide an abundance of extra lighting for anyone in the area. This intelligent feature allows the solar powered street light to save power when no one is in range or utilizing the light, meaning a much longer run time than you would expect from a similar size solar lighting.



## Product Features

- Easy installations, no electrical bills: solar powered led street light, can be mounted on wall or pole, that in direct sunlight for charging.
- Motion and light sensor built in:solar led street light goes on at dusk at 50% brightness. Can go from 50% power to full brightness when motion is detected.
- With infrared body induction controlled technology, it can store energy during the daylight, when people pass through at night it auto modulate on/off.

## Specifications

- Wide power range : 10W - 100W
- Color Rendering Index (CRI) : 80
- IP Rating : IP65
- Material : Aluminum Alloy + PC
- Certifications : CE, EMC, LVD, RoHS



## Applications

- Street, highway, pathway, road, sidewalk, factories, schools, gardens, courtyard, parks, etc....



# MINI ALL - IN - ONE SOLAR STREET LIGHT

Our mini All in One solar LED street light integrate with light sensor and motion sensor. When it is daytime, the light will be turned off automatically. When it is at night, the light will be turned on automatically. When the light is turned on, the motion sensor will start to work. The brightness also will change base on the time. From 1st to 4th hour: 100% brightness when people pass, 50% brightness when people leave. From 5th to 8th hour: 70% brightness when people pass, 40% brightness when people leave. From 9th hour to the time when it is turned off: 60% brightness when people pass, 30% brightness when people leave

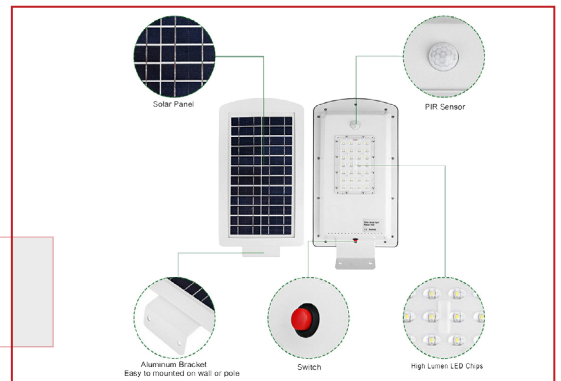


## Product Features

- Easy installations, no electrical bills: solar powered led street light, can be mounted on wall or pole, that in direct sunlight for charging.
- Motion and light sensor built in:solar led street light goes on at dusk at 50% brightness. Can go from 50% power to full brightness when motion is detected.
- With infrared body induction controlled technology, it can store energy during the daylight, when people pass through at night it auto modulate on/off.

## Specifications

- Wide power range : 10W - 100W
- Color Rendering Index (CRI) : 80
- IP Rating : IP65
- Material : Aluminium Alloy
- Certifications : CE, EMC, LVD, RoHS



## Applications

- Street, highway, pathway, road, sidewalk, factories, schools, gardens, courtyard, parks, etc....



# INTEGRATED SOLAR STREET LIGHT

Integrated solar street lamp is mainly composed of light sources, controllers, light poles, batteries, solar panels, which connected by wires, and also contains some standard parts, auxiliary parts.

Environmental protection and energy saving: Powered by sunlight, solar street lamps converted the solar energy into electrical energy and then converted into light energy.



## Product Features

- 💡 Adjustable panel bracket apply to different install place.
- 💡 17-19% high efficiency monocrystalline silicon solar panel.
- 💡 Solar controller with section working saves cost for system.
- 💡 Colloid storage battery apply to harsh environment.

## Specifications

- 💡 Wide power range : 30W - 90W
- 💡 Continuous Working Days : 3 days
- 💡 Input Voltage : DC24V
- 💡 Battery Capacity : 80Ah - 150Ah
- 💡 Certifications : CE, RoHS



## Applications

- 💡 Street, highway, pathway, road, sidewalk, factories, schools, gardens, courtyard, parks, etc....



# FLOOD LIGHT

Takes over the place of the traditional High Pressure Sodium and Halogen floodlights and are suitable for multiple areas of use. The RLX™ D is a powerful floodlight with proven endurance for harsh environments. The light distribution is excellent and will ensure a bright and safe working environment.



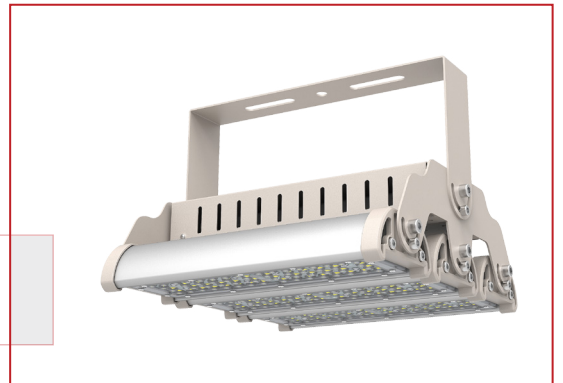
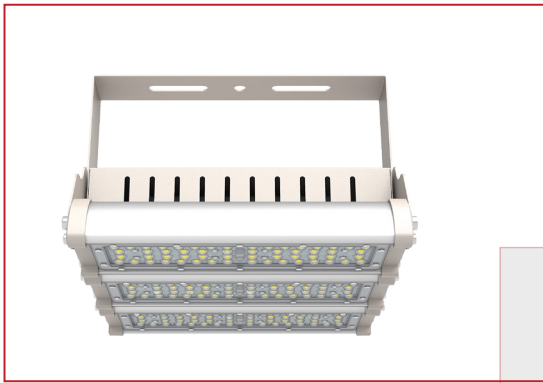


## Product Features

- 💡 Advance optical design, extraordinary uniformity of brightness.
- 💡 The housing is with compact appearance and light in weight, which will lessen transportation cost.
- 💡 Rational structure design results in less dust accumulation and strong self-cleaning ability.
- 💡 Energy-saving. Environmental friendly.

## Specifications

- 💡 Wide power range : 100W - 600W
- 💡 Color Rendering Index (CRI) : 70,80
- 💡 IP Rating : IP65
- 💡 Material : Aluminum Alloy
- 💡 Certifications : CE,RoHS



## Applications

- 💡 Sports field, construction site, square, factory, workshop, warehouse, high ceiling building or outdoor applications, etc...



## Product Features

- Adjustable angle. Flexible to rotate.
- Smart design, elegant appearance and well-selected materials.
- Energy saving, environmental design and safety.
- Easy tool on site maintenance and repair.

## Specifications

- Wide power range : 100W - 300W
- Color Rendering Index (CRI) : 80
- IP Rating : IP65
- Material : Aluminum Alloy + PC
- Certifications : CE,EMC,FCC,LVD,RoHS



## Applications

- Sports field, construction site, square, factory, workshop, warehouse, high ceiling building or outdoor applications, etc...

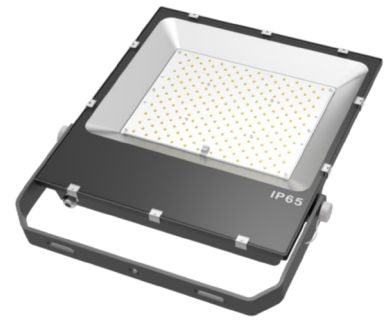


## Product Features

- 💡 Heat pipe technology and fin-shape radiator, excellent heat dissipation and super light in weight.
- 💡 Smart design, elegant appearance and well-selected materials.
- 💡 Energy saving, environmental design and safety.
- 💡 Easy tool on site maintenance and repair.

## Specifications

- 💡 Wide power range : 70W - 200W
- 💡 Color Rendering Index (CRI) : 70,80
- 💡 IP Rating : IP65
- 💡 Material : Aluminum Alloy
- 💡 Certifications : CE,RoHS



## Applications

- 💡 Sports field, construction site, square, factory, workshop, warehouse, high ceiling building or outdoor applications, etc...



# HIGHBAY LIGHT

With LIESOL's high bay series, it is now so easy to modernize your commercial or industrial application; it is the perfect alternative for your traditional lighting system. Our high bay series is both an economical and ecological solution to your lighting needs on high ceiling installations. The LED high bay is a high efficiency retrofitting solution for traditional luminaires that allows for significant savings in energy and maintenance costs. It is also designed to mimic the appearance of the traditional HID high bay.



## Product Features

- 💡 Clean and fluent housing design.
- 💡 Integrated terminal box for easy wiring of different smart control solutions.
- 💡 Magnesium alloy ensures good heat dissipation and low temperature rise.
- 💡 Energy saving, environmental design and safety.

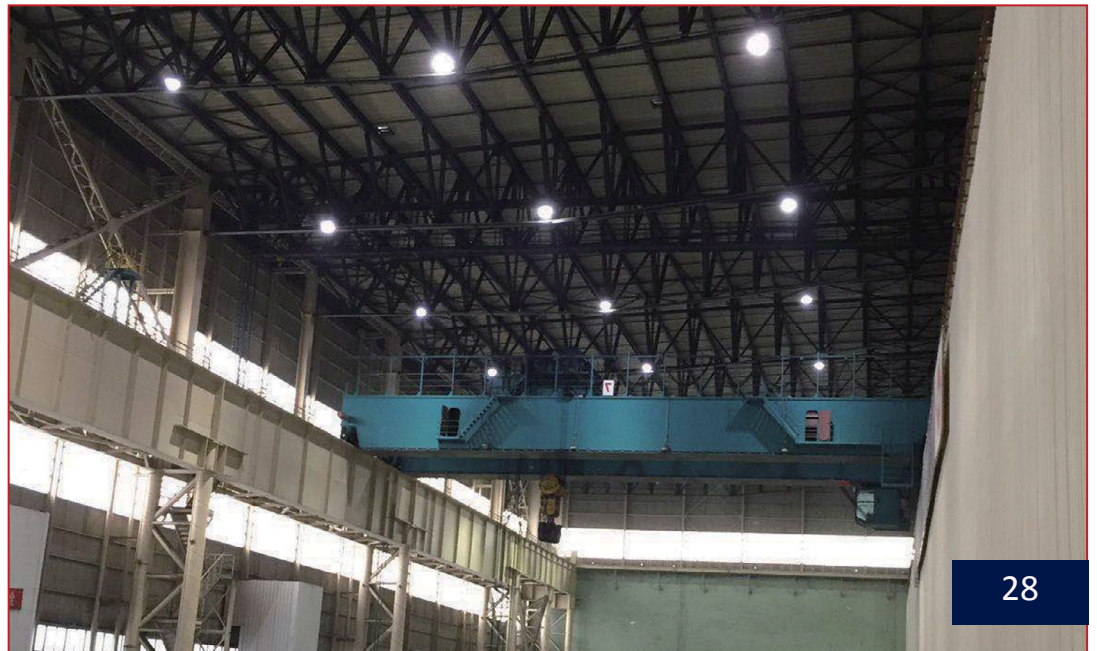
## Specifications

- 💡 Wide power range : 150W - 240W
- 💡 Color Rendering Index (CRI) : 70,80
- 💡 IP Rating : IP65
- 💡 Material : Aluminum Alloy
- 💡 Certifications : CE,RoHS



## Applications

- 💡 Gymnasium, supermarket, refrigeration storage, warehouse, parking lot, logistics center and other high-rise buildings, etc...



## Product Features

- Excellent light distribution design, no dark area or yellow spot.
- Integrated design helps to save freight cost and simplify installation process.
- High transmittance lens contributes to high lumen output of 140lm/w.
- Modular structure enhances air flow, which accelerates heat dissipation.

## Specifications

- Wide power range : 60W - 120W
- Color Rendering Index (CRI) : 70,80
- IP Rating : IP65
- Material : Aluminum Alloy + PC
- Certifications : CE,RoHS







## Applications






- Gymnasium, supermarket, refrigeration storage, warehouse, parking lot, logistics center and other high-rise buildings, etc...



## Product Features

-  Motion sensor built-in smart control, energy saving.
-  High precision optics by premium PC Japan, super high lumen output up to 160lm/W.
-  Robust housing and thoughtful air ventilation structure deliver optimized heat dissipation with high efficacy.
-  Easy installation and maintenance free.

## Specifications

-  Wide power range : 100W - 200W
-  Color Rendering Index (CRI) : 70, 80
-  IP Rating : IP65
-  Beam Angle : 60°, 90°, 120°
-  Certifications : CE, RoHS, SAA, DLC, UL




Microwave radar sensor dimmer

With remote controller



## Applications

-  Gymnasium, supermarket, refrigeration storage, warehouse, parking lot, logistics center and other high-rise buildings, etc...



## Product Features

- Die-casting aluminum by food grade powder coating with optical grade lens from Japan, safer and more reliable for food processing.
- Flicker free driver combined with NICHIA/CREE 3030 available.
- Easy self-cleanness benefits from smooth surface, no screws and dusty.

## Specifications

- Wide power range : 100W - 150W
- Color Rendering Index (CRI) : 70, 80
- IP Rating : IP69
- Beam Angle : 60°, 90°, 120°
- Certifications : CE, RoHS



Food grade powder coating

Hook/suspension mounted







## Applications

- Food and beverage processing, supermarket, refrigeration storage, logistics center and other high-rise buildings, etc...





## Product Features

-  Purpose built for high temperature areas in light of certain industrial facilities.
-  Take the smart control of on/off /1-10V dimming, energy saving.
-  Adopting ACD12 die-casting aluminum.
-  Precision made optics with high light transmittance up to 160lm/W.

## Specifications

-  Wide power range : 100W & 150W
-  Color Rendering Index (CRI) : 70, 80
-  IP Rating : IP66
-  Beam Angle : 60°, 90°, 120°
-  Certifications : CE, RoHS




High temperature application withstand 65°

Fast heat dissipation



## Applications

-  Iron & steel - making, boiler room, warehouse, manufacturing process, logistics center and other high-rise buildings, etc...



# EXPLOSIVE PROOF LIGHT

Explosion-proof lighting or hazardous locations luminaires , are used in environments where flammable gases or combustible dusts exist. These special lights have to be tested and approved by strict regulations in different regions. In North American regions, UL844 is the official approval for these explosion-proof lights, under UL844 regulations, different hazardous locations are defined by Class and Division systems like Class I Division 1 or Class I Division 2, Class II Division 1 or Class II Division 2. While in European regions, ATEX or IECEx is officially required certificate, different hazardous locations usually defined as different zones like Gas environment can be divided into zone 0 , zone 1 and zone 2, dust environment can be divided into zone 20, zone 21 and zone 22.

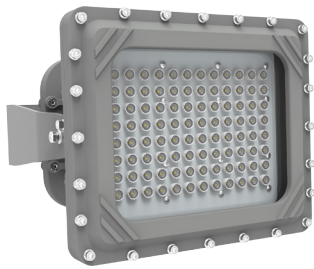


## Product Features

- Instant illumination & restrike, no warm-up time required.
- Shock-and vibration-resistant - Durable LEDs with solder-less board connection.
- Copper-free aluminum body and frame -corrosion resistant.
- Thermal shock and impact resistant glass lens.
- All exposed fasteners with quality stainless steel.

## Specifications

- Wide power range : 80W - 150W
- Color Rendering Index (CRI) : 70
- IP Rating : IP66
- Beam Angle : 25°/ 60° / 120°
- Certifications : FC, CULUS, IECEX, DLC



## Applications

- Heavy industrials, power plant, oil rig, storage facility, chemical platform facility, loading docks, shipyard, gas station, etc.

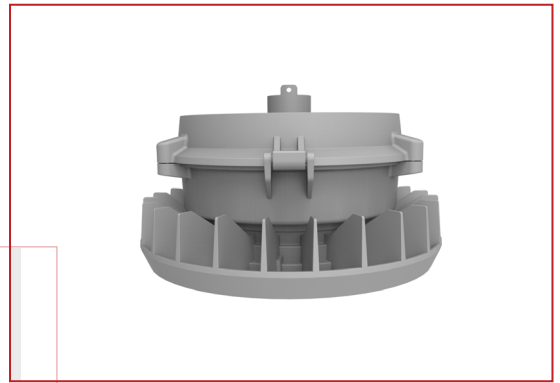


## Product Features

- Instant illumination & restrike, no warm-up time required.
- Shock-and vibration-resistant - durable LEDs with solder-less board connection.
- Die-cast aluminum body and frame-corrosion resistant.
- Thermal shock and impact resistant glass lens.
- Light weight and compact design.

## Specifications

- Wide power range : 45W / 65W
- Color Rendering Index (CRI) : 70
- IP Rating : IP66
- Beam Angle : 110°
- Certifications : CULUS, FC, DLC



## Applications

- Heavy industrials, power plant, oil rig, storage facility, chemical platform facility, loading docks, shipyard, gas station, etc.

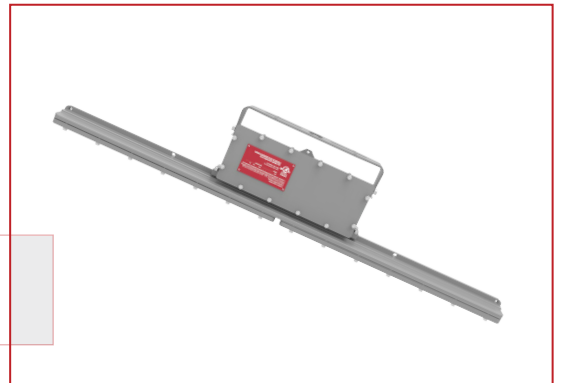


## Product Features

- 💡 Copper-free aluminum body and corrosion resistant.
- 💡 Mounting: ceiling, wall, hanging chain, stanchion, dependant type stant tempered glass.
- 💡 Best-in-class system efficacy - Up to 120 Lm / W).
- 💡 Wide ambient temp. range from - 40°C to + 60 °C (-40°F ~ + 140°F)
- 💡 Slim and compact design.

## Specifications

- 💡 Wide power range : 40W / 80W
- 💡 Color Rendering Index (CRI) : 70
- 💡 IP Rating : IP66
- 💡 Beam Angle : 60° / 110°
- 💡 Certifications : CULUS, FC, DLC



## Applications

- 💡 Heavy industrials, power plant, oil rig, storage facility, chemical platform facility, loading docks, shipyard, gas station, etc.







# GAS STATION LIGHTING

The bright, high-CRI light of LED gas station lights will not only make your establishment stand out from the rest but will also make it more inviting to customers. The chances are very high that a motorist will rather drive into a well-lit gas station rather than visit one with dull, flickering lights.






LED lights will offer high-quality light in every area of your gas station. With a color rendering index of above 80, they display colors just as well as the sun's midday light. This feature, coupled with LED's high color temperatures, make LED canopy lights very capable of illuminating a gas station at night, especially in areas that don't easily get light.

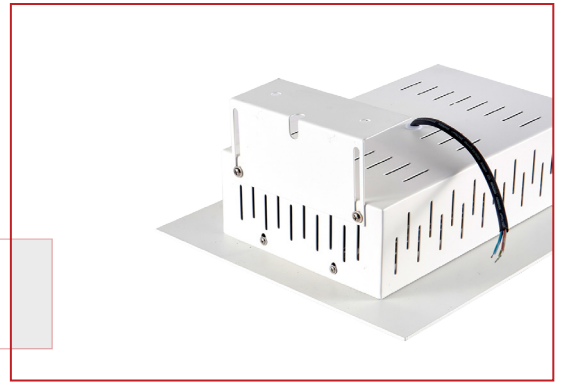


## Product Features


-  360° air flow design to create lower working temperature.
-  Unique optic reflector creates good performance light effort.
-  High strength steel board case against dust in the heat sink.
-  Energy saving 80% to replace metal halide light.

## Specifications

-  Wide power range : 100W - 200W
-  Beam Angle : 90°
-  IP Rating : IP65
-  Color Rendering Index (CRI) : 70,80
-  Certifications : CE, RoHS



## Applications

-  Gas station, heavy industrials, power plant, oil rig, storage facility, loading docks, shipyard, etc...



# MARINE LIGHT

Our Industrial Grade Marine LED lights are designed for the harsh environments of industrial and marine environments. IP68 rated, with power options from 100W to 1000W and optic packages for spot to flood lighting. These lights can be used in both onshore and offshore applications. They are designed to withstand harsh salt spray environments. They can be equipped with flood or spot lighting optics to offer broad or pin point lighting options.





## Product Features

- 💡 Lumileds LEDs, flip chip technology, single unit's damage won't affect others' normal work.
- 💡 Honeycomb briquette effect heat dissipation principle, best thermal management system.
- 💡 Multiple lighting distributions available. Easy tool onsite maintenance and repair.
- 💡 Designed to last at least 60,000 hours at L70.

## Specifications

- 💡 Wide power range : 30W - 400W
- 💡 CCT : 3000K - 5700K
- 💡 IP Rating : IP66
- 💡 Color Rendering Index (CRI) : 70
- 💡 Certifications : CE



## Applications

- 💡 Heavy industrials, power plant, oil rig, storage facility, loading docks, shipyard, chemical processing facility, etc...



# FISHING UNDER- GROUND LIGHT

Our LED fishing light attractor is a fishing aid which uses lights attached to structure above water or suspended underwater to attract both fish and members of their food chain to specific areas in order to harvest them.



## Product Features

- 💡 Very good tightness ; can work under sea water depth 100 meters.
- 💡 Excellent electrical insulation, withstand voltage 1500V ; never leakage of electricity.
- 💡 The interface of cable with three coats IP68 standard protection ; when the cable protector or the core is damaged, the circuit inside the lamp will not be affected.
- 💡 Cables can be chaged freely.

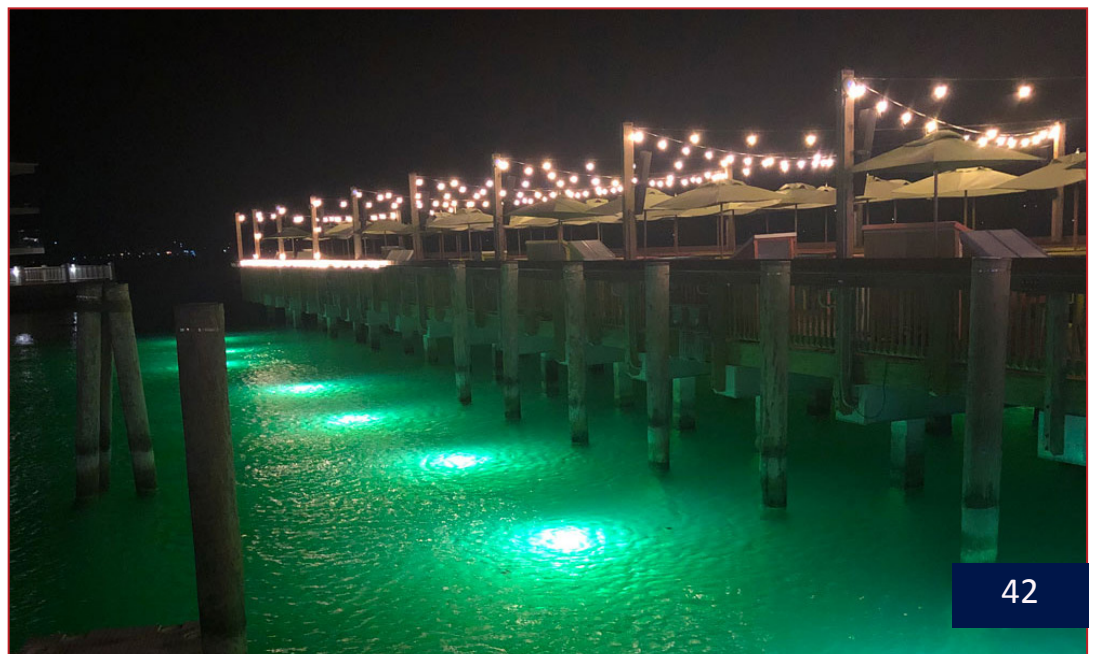
## Specifications

- 💡 Wide power range : 1000W & 2000W
- 💡 Color Rendering Index (CRI) : 80
- 💡 IP Rating : IP68
- 💡 Material : Aluminum Alloy
- 💡 Certifications : CE



## Applications

- 💡 Lamplight fishing in deep sea and Pelagic: falling net and night fishing in rivers, lakes and reservoirs, etc...



# STADIUM LIGHTING

For stadium lighting, whether for an indoor arena or outdoor field, invest in an LED lighting solution from SpecGrade LED. High-tech LED lighting technology is taking over metal halide lamps because LED lighting has proven to be reliable, versatile and energy efficient. Outdoor stadiums require LED lights that can withstand a variety of weather conditions including high winds, rain, and freezing temperatures. LED lights also need to perform over long distances from the actual bulbs to the field's surface. Avoid light pollution with the razor-sharp definition that LED light can provide to your field.



## Product Features

- 💡 Lumileds LEDs, flip chip technology, single unit's damage won't affect others' normal work.
- 💡 Honeycomb briquette effect heat dissipation principle, best thermal management system.
- 💡 Multiple lighting distributions available. Easy tool onsite maintenance and repair.
- 💡 Designed to last at least 72,000 hours at L70.

## Specifications

- 💡 Wide power range : 500W - 1000W
- 💡 Color Rendering Index (CRI) : 70
- 💡 IP Rating : IP68
- 💡 Material : Die-cast aluminum & stainless steel
- 💡 Certifications : CE, RoHS



## Applications

- 💡 Stadium, arena, tunnel, warehouse, factory, rink, sports field, crossroad, golf course, etc...

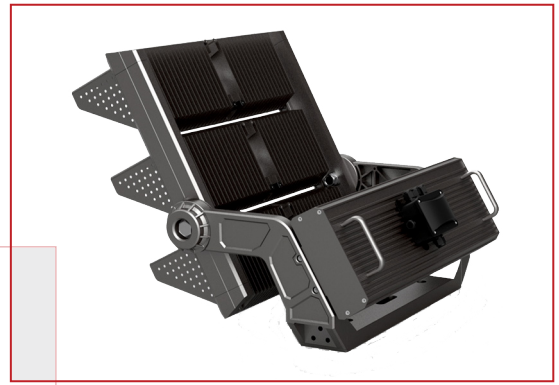


## Product Features

- 💡 Precision aiming with the device will assist to precisely align the light to aiming point with a green laser ray of maximum 300m distance projecting ability.
- 💡 Visor to trim the excess upward light
- 💡 Wireguard to protect the fixture
- 💡 Detachable external driver box

## Specifications

- 💡 Wide power range : 600W - 1500W
- 💡 Beam Angle : Symmetric & Asymmetric
- 💡 IP Rating : IP66
- 💡 Color Rendering Index (CRI) : 70
- 💡 Certifications : CE, CB, RoH, SAA



## Applications

- 💡 Stadium, arena, tunnel, warehouse, factory, rink, sports field, crossroad, golf course, etc...



## Product Features

- 💡 Unique patent design , level 17 windproof , Level WF2 anti-corrosion.
- 💡 Thickened stainless steel bracket and gear angle adjusting device ensure long-term stable performance.
- 💡 Multiple light distributions for different applications.

## Specifications

- 💡 Wide power range : 300W - 1000W
- 💡 Color Rendering Index (CRI) : 70
- 💡 CCT : 4000K - 6500K
- 💡 Beam Angle : 15°, 30°, 60°
- 💡 Certifications : CE, RoHS



## Applications

- 💡 Stadium, arena, tunnel, warehouse, factory, rink, sports field, crossroad, golf course, etc...



# AIRPORT LIGHTING

LIESOL LED offers airport LED lighting that provide both lasting performance and cost saving energy efficiency. Our high-quality LED luminaires are used in airport applications around the world on concourses, tarmacs, jetways, hangars, aprons and other areas. LED airfield lighting is increasingly used at airports all over the world, largely because of the potential for this technology to produce substantial savings in terms of maintenance and energy costs<sup>1</sup>. Information about LED lighting systems in terms of performance, cost, and other operations issues is not readily found in a single location.





## Product Features

- 💡 Lumileds LEDs, flip chip technology, single unit's damage won't affect others' normal work.
- 💡 Honeycomb briquette effect heat dissipation principle, best thermal management system.
- 💡 Optimized industrial design against accumulation of water and dust.
- 💡 Designed to last at least 72,000 hours at L70.

## Specifications

- 💡 Wide power range : 500W
- 💡 Color Rendering Index (CRI) : 70
- 💡 IP Rating : IP68
- 💡 Material : Die-cast aluminum & stainless steel
- 💡 Certifications : CE, RoHS



## Applications

- 💡 Airport, stadium, arena, tunnel, warehouse, factory, rink, sports field, crossroad, golf course, etc...



# PROJECTOR LIGHT

Our projector LED is the perfect luminaire for permanent outdoor installations that require crisp and narrow beams. Its lightweight and compact design provides a unique solution for entrance features, signage, landscape, cruise ships, and beach installations. Despite the small physical footprint, this compact projector with full 'moving head' functionality cuts through anything, providing extreme brightness and high contrast levels. Alongside the motorized focus and an optional remote base feature, it offers an unsurpassed variety of effects with both a color wheel and a gobo wheel for powerful mid-air effects.



## Product Features

- 💡 Square body with small-middle-big 3 housings, ADC12 die-cast aluminium.
- 💡 Smooth surface with self-clean coating avoid dust pile and offers delicate appearance.
- 💡 Many applications available, can be projector, wall washer, tree projector or wall mounting, etc.
- 💡 Chimney radiating design small housing with big power.

## Specifications

- 💡 Wide power range : 2W - 36W
- 💡 CCT : 3000K - 5000K / RGB
- 💡 IP Rating : IP66
- 💡 Beam Angle : 3.5°, 7°, 15°, 25°, 40°, 60°
- 💡 Certifications : CE



## Applications

- 💡 Sea port, airport, bridge, architecture, industrial facility, stadium, high mast, plaza, street, professional lighting ....



# W A L L W A S H E R

Wall washer lights are becoming increasingly popular as a secondary lighting source and are available in many different styles and finishes. The real beauty of this type of lighting is that its main function is to wash, or bathe, your walls with the light, allowing you to create exactly the right feel for a room or to accentuate a wall feature or alcove. A wall washer has a number of advantages when compared to the more traditional style of the wall light. The main advantage is that they sit flush to the wall making them ideal for the smaller room or for narrow places such as hallways, as they project far less into space.

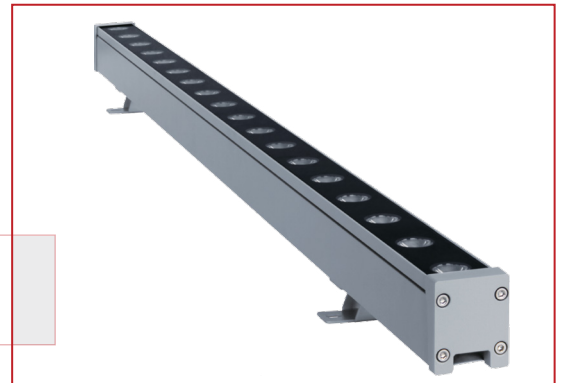
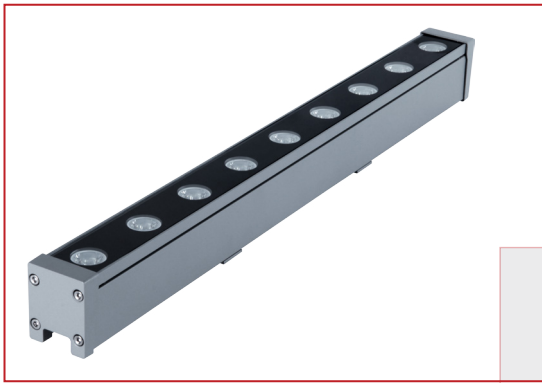


## Product Features

- 💡 Plug type water proof structure with cable side out design.
- 💡 Isolated wiring structure design prevent cable from water flow.
- 💡 Reinforced aluminium alloy body, integral heat sink structure.
- 💡 Anti-reversed connect design with ESD make power supply and signal protection up to 4KV.

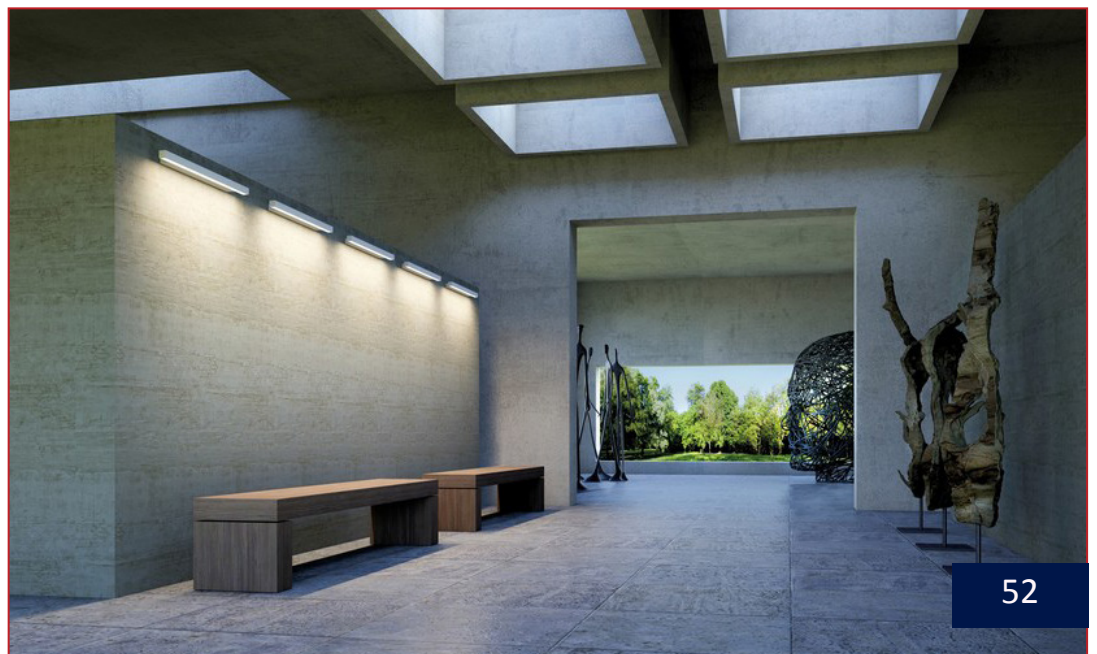
## Specifications

- 💡 Wide power range : 12W - 48W
- 💡 CCT : 3000K - 5000K / RGB
- 💡 IP Rating : IP66
- 💡 Beam Angle : 7°, 25°, 40°, 60°, 8x35°, 10x50°
- 💡 Certifications : CE



## Applications

- 💡 Indoor & outdoor such as: retail, shopping mall, building exterior, tunnel, park, museum, exhibition, etc...

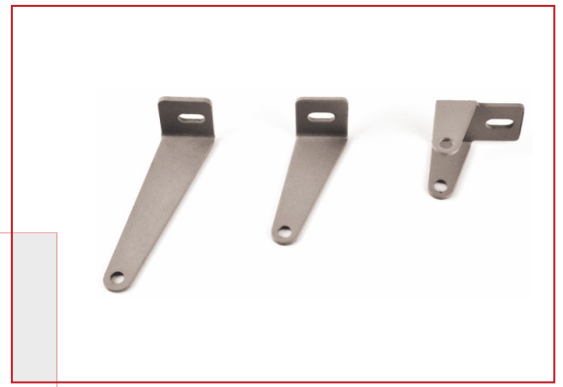


## Product Features

- 💡 Plug type water proof structure with cable side out design.
- 💡 Isolated wiring structure design prevent cable from water flow.
- 💡 Reinforced aluminium alloy body, integral heat sink structure.
- 💡 Anti-reversed connect design with ESD make power supply and signal protection up to 4KV.
- 💡 Lamp body adjustable, apply to different lighting method.

## Specifications

- 💡 Wide power range : 21W - 60W
- 💡 CCT : 3000K - 5000K / RGB
- 💡 IP Rating : IP66
- 💡 Beam Angle : 7°, 25°, 40°, 60°, 8x35°, 10x50°
- 💡 Certifications : CE



## Applications

- 💡 Indoor & outdoor such as: retail, shopping mall, building exterior, tunnel, park, museum, exhibition, etc...

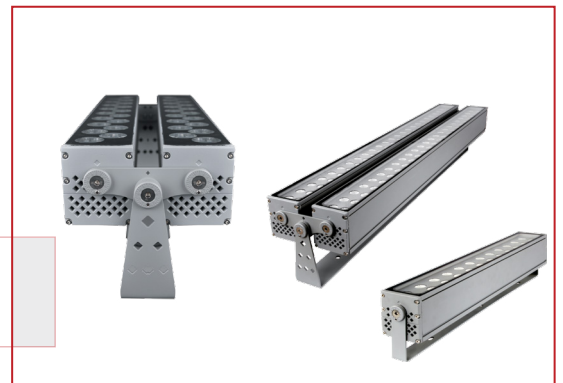
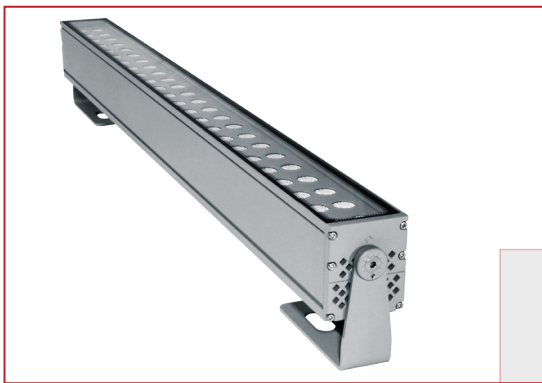


## Product Features

- 💡 Plug type water proof structure with cable side out design.
- 💡 3.5° super narrow lens available, with max shooting range 200M.
- 💡 Reinforced aluminium alloy body, integral heat sink structure.
- 💡 Anti-reversed connect design with ESD make power supply and signal protection up to 4KV.

## Specifications

- 💡 Wide power range : 42W - 220W
- 💡 CCT : 3000K - 5000K / RGB
- 💡 IP Rating : IP66
- 💡 Beam Angle : 7°, 25°, 40°, 60°, 8x35°, 10x50°
- 💡 Certifications : CE



## Applications

- 💡 Indoor & outdoor such as: retail, shopping mall, building exterior, tunnel, park, museum, exhibition, etc...



# DOWN LIGHT

LIESOL's downlights provide exceptional light output in a sophisticated, sleek design that replicates the look of a traditional downlight but at a fraction of the energy and maintenance costs. The sleek design of the LIESOL downlight allows for an easy installation while providing an excellent light output. Its thin profile allows it to be mounted exactly where you need it without any ceiling constraints. LIESOL's LED Downlights are easy to install and allow you to direct the light where needed. Whether in new construction or in retrofit applications, the module and trim combination will fit any application.





## Product Features

- 💡 NGR(Non Glare Reflector) Technology providing comfort and quality light to reduce stress.
- 💡 The integrated body structure provides strong heat dissipation.
- 💡 Comfortable. Healthy. Energy-saving.
- 💡 Dust & Scratch proof reflector.

## Specifications

- 💡 Wide power range : 7W - 30W
- 💡 Color Rendering Index (CRI) : 80,90,97
- 💡 Lifespan : 50000 hours
- 💡 Beam Angle : 24°,30°,40°,60°
- 💡 Certifications : CE,RoHS,SASO,SAA,TUV



## Applications

- 💡 Indoor area such as: showroom, office, museum, exhibition, shopping mall, retail, hospitality, school, etc.



## Product Features

- 💡 Different glass ; lens, transparent glass, full frosted glass, semi-frosted glass.
- 💡 Dimmable available.
- 💡 Comfortable. Healthy. Energy-saving.
- 💡 Available in 3 colors ; white,black,silver.

## Specifications

- 💡 Wide power range : 20W & 30W
- 💡 Color Rendering Index (CRI) : 80,90,95
- 💡 Lifespan : 50000 hours
- 💡 Beam Angle : 15°,20°,24°,30°,40°
- 💡 Certifications : CE,RoHS,SASO,SAA,TUV



## Applications

- 💡 Indoor area such as: showroom, office, museum, exhibition, shopping mall, retail, hospitality, school, etc.



## Product Features

- 💡 Different glass ; lens, transparent glass, full frosted glass, semi-frosted glass.
- 💡 Line length according to customer requirements.
- 💡 Comfortable. Healthy. Energy-saving.
- 💡 Available in 3 colors ; white,black,silver

## Specifications

- 💡 Wide power range : 15W - 30W
- 💡 Color Rendering Index (CRI) : 80,90,95
- 💡 Lifespan : 50000 hours
- 💡 Beam Angle : 20°,30°,40°,60°
- 💡 Certifications : CE,RoHS,SASO,SAA,GS



## Applications

- 💡 Indoor area such as: showroom, office, museum, exhibition, shopping mall, retail, hospitality, school, etc.



# PANEL LIGHT

Because LEDs are integrated into our panel and troffer lights, there are no bulbs to replace. Light is delivered exactly where it's needed. Reflectors aren't necessary, and no light is lost before making it out of the fixture. LED panel lights are available in many sizes, including popular 2'x2' and 2'x4' styles. Our panel lights use light guide plates and perimeter-mounted LEDs to emit a smooth, even glow with no visible bulbs (hot spots). Unlike fluorescent bulbs, these LED panel lights are flicker free and contain no mercury. Mount them in drop ceilings, suspend them, or mount them directly on ceiling surfaces.



## Product Features

- 💡 High quality aluminum, anti-rust, anti-corrosion.
- 💡 Light guide plate use good PMMA material, anti-aging, anti-yellowing.
- 💡 Patented hook design, easy to install, safe and reliable.

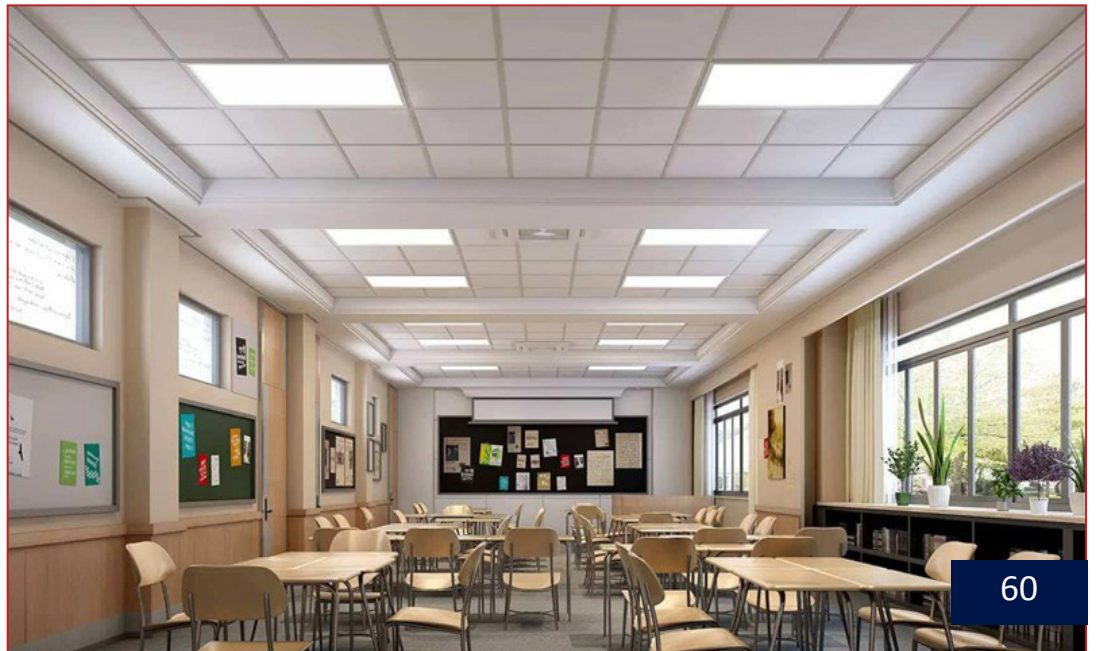
## Specifications

- 💡 Wide power range : 10W - 40W
- 💡 Color Rendering Index (CRI) : 80
- 💡 Lifespan : 35000 hours
- 💡 Beam Angle : 110°
- 💡 Certifications : CE, RoHS



## Applications

- 💡 Indoor area such as: schools, university, showroom, office, museum, exhibition, shopping mall, retail, etc.

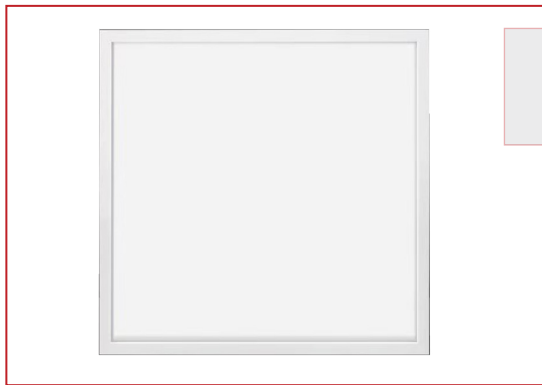


## Product Features

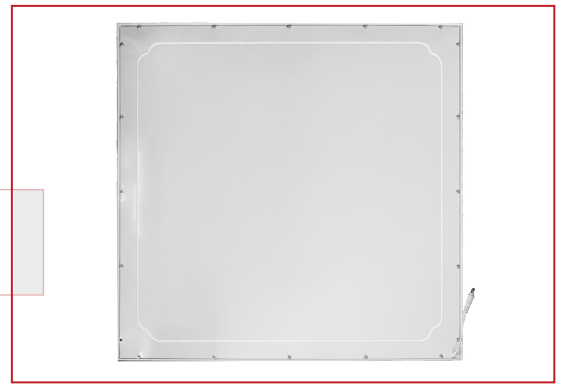
- By adding TiO<sub>2</sub>, it produces a new antibacterial, anti fouling and deodorization.
- Experiment shows, 0.1mg/cm Nano-TiO<sub>2</sub> can thoroughly kill malignant HeLa Cell. By increased SOD, TiO<sub>2</sub> kills cancer more.
- With TiO<sub>2</sub>, tap water can achieve the standard of drinking water.

## Specifications

- Wide power range : 36W - 45W
- Color Rendering Index (CRI) : 80/90
- IP Rating : IP20
- Beam Angle : 75° - 120°
- Certifications : TUV, GS, CE, RoHS



Antibacterial panel light



Self-cleaning coating material

## Applications

- Indoor area such as: hospital, laboratory, other medical facilities, operating room, etc.

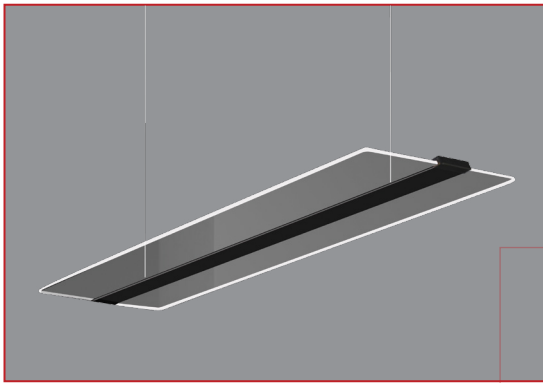


## Product Features

- 💡 Master lighting & auxiliary lighting can be controlled and adjusted independently.
- 💡 Stylish appearance design with superior heat dissipation structure.
- 💡 Smart lighting system of CCT and brightness dimmable.
- 💡 Excellent nano-particles light guide plate to assure soft light and high light-outing efficiency.

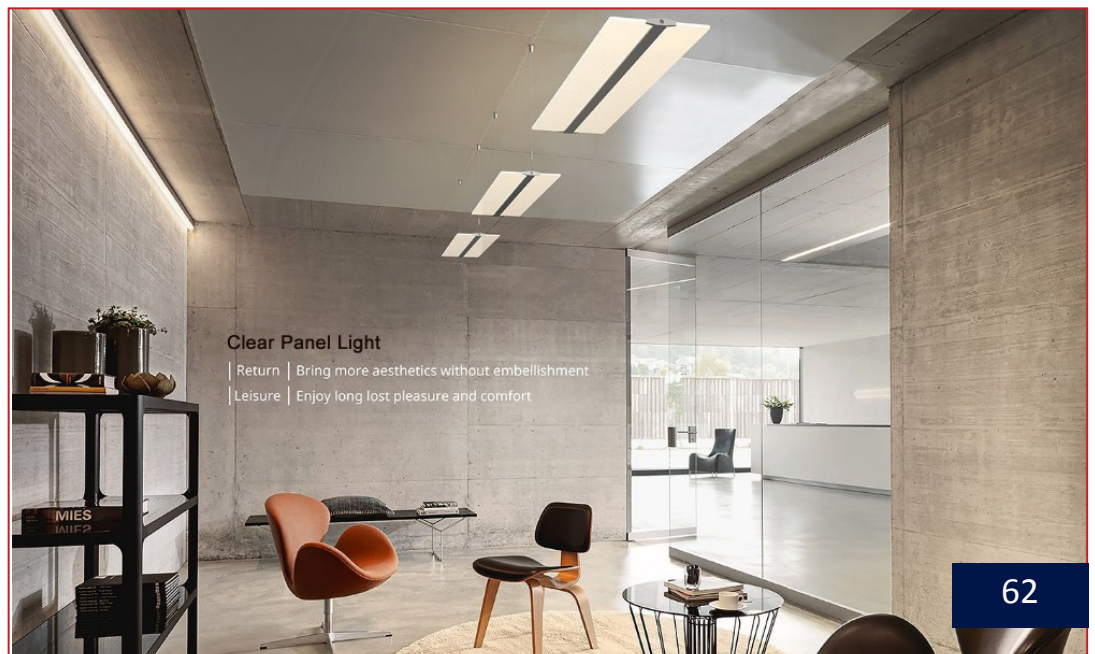
## Specifications

- 💡 Wide power range : 40W
- 💡 Color Rendering Index (CRI) : 80
- 💡 CCT: 3000K - 6500K
- 💡 Beam Angle : 360°
- 💡 Certifications : EU



## Applications

- 💡 Indoor area such as: schools, university, showroom, office, museum, exhibition, shopping mall, retail, etc.



# PANEL DOWN LIGHT

LED panel downlights are products developed on the basis of traditional downlights using new LED lighting sources. Compared with traditional downlights, LED panel downlights have the following advantages: energy saving, low carbon, long life, good color rendering, and fast response. The design of LED panel downlight is more beautiful and light also thin. It can maintain the overall unity and perfection of the building decoration during installation. It does not damage the setting of the lamp. The light source is hidden inside the building decoration. The light source is not exposed, no glare and the visual effect of the person is soft and even.





## Product Features

- High quality aluminum, anti-rust, anti-corrosion.
- Light guide plate use good PMMA material, anti-aging, anti-yellowing.
- Easy to install, safe and reliable.
- Ultra thin design ; uniform luminance.

## Specifications

- Wide power range : 3W - 18W
- Color Rendering Index (CRI) : 80
- Lifespan : 30000 hours
- Beam Angle : 110°
- Certifications : CE



## Applications

- Indoor area such as: schools, university, showroom, office, museum, exhibition, shopping mall, retail, hotel, etc.



# LINEAR LIGHT

LIESOL's LED linear luminaires are an energy-efficient, low maintenance alternative to traditional linear fluorescent luminaires in a variety of commercial, low bay lighting applications. It is the ideal replacement for traditional fluorescent strip luminaires in commercial, industrial and retail applications.



## Product Features

- 💡 Aluminum heat-sink base and anti glare.
- 💡 Stylish appearance design with superior heat dissipation structure.
- 💡 Dimmable available. Easy to install, safe and reliable.

## Specifications

- 💡 Wide power range : 40W
- 💡 Color Rendering Index (CRI) : 80, 90, 97
- 💡 Output : 3000 - 3500lm
- 💡 Beam Angle : 12°, 34°, 48°
- 💡 Certifications : RoHS



## Applications

- 💡 Indoor area such as: schools, university, showroom, office, museum, exhibition, shopping mall, retail, etc.



# TRACK LIGHT

Focused and bright, LED track and monorail lighting brings welcomed directional illumination to your home. Often considered to carry an industrial look, this style of ceiling lighting offers versatile, yet focused sources of light from a series of directional heads or pendant lights. A track or monorail system is the perfect choice for contemporary rooms and either fulfills a functional purpose of directing focused downlight or acts as a provider of general, ambient illumination. And with the use of LEDs, your home will be stylish and energy efficient.



## Product Features

- Aluminum heat-sink base and anti glare.
- Stylish appearance design with superior heat dissipation structure.
- 350° rotation right and left. 180° rotation up and down. Seamless rotation shaft with cable inside invisible.
- Easy to install, safe and reliable.

## Specifications

- Wide power range : 13W
- Color Rendering Index (CRI) : 80/90
- Lifespan : 50000 hours
- Beam Angle : 12°,36°,48°,90°
- Certifications : CE,RoHS,SAA,TUV,SASO



## Applications

- Indoor area such as: restaurant, museum, exhibition, hospitality shopping mall, retail, office, etc.



## Product Features

- 💡 Aluminum heat-sink base and anti glare.
- 💡 Stylish appearance design with superior heat dissipation structure.
- 💡 Easy to install, safe and reliable.

## Specifications

- 💡 Wide power range : 30W
- 💡 Color Rendering Index (CRI) : 80/90/96
- 💡 Beam Angle : 21°,30°,40°,42°,60°
- 💡 Lifespan : 50000 hours
- 💡 Certifications : CE,RoHS,SAA,SASO,GS



## Applications

- 💡 Indoor area such as: restaurant, museum, exhibition, hospitality shopping mall, retail, office, etc.



## Product Features

- Aluminum heat-sink base and anti glare.
- Using the optical zoom module, their sharp edged beam can be adjusted to suit the format of images and objects in the room or on the wall.
- Easy to install, safe and reliable.

## Specifications

- Wide power range : 25W - 35W
- Color Rendering Index (CRI) : 97
- IP Rating : IP40
- Beam Angle : 20° - 30° zoomable
- Certifications : CE



Special track light for museum

Excellent zoomable lens



## Applications

- Indoor area such as: restaurant, museum, exhibition, hospitality shopping mall, retail, office, etc.



# TUBE LIGHT

T8 & T5 LED lights are commonly used for office lighting and can replace fluorescent lights in both parabolic and indirect light fixtures. They work best in climate controlled areas with standard ceiling heights, including storage areas, fabrication floors, and mechanic garages. LED tubes are an energy efficient replacement for fluorescent tubes.





## Product Features

- 💡 Reasonable structure : no dark spot, no dazzle, overvoltage withstand 3750V, passed dropping test.
- 💡 High lumen SMD 2835, LM-80 test passed, ANSI and ERP standard.
- 💡 High-purity aluminum material 6063 : surface through anodic oxidation process.
- 💡 PC cover material Japan TEIJIN, fire rating VO, light transmittance rate > 88% for milky cover, >95% for clear cover, anti-UV, neither getting yellowing nor brittle

## Specifications

- 💡 Wide power range : 9W - 36W
- 💡 Color Rendering Index (CRI) : 85
- 💡 Lifespan : 50000 hours
- 💡 IP Rating : IP22
- 💡 Certifications : CE,RoHS,SAA,DLC



T8 with high quality material



## Applications

- 💡 Indoor & outdoor area such as: supermarket, station, office, parking garage, shopping mall, retail, etc.



## Product Features

- Reasonable structure : no dark spot, no dazzle, overvoltage withstand 3750V, passed dropping test.
- High lumen SMD 2835, LM-80 test passed, ANSI and ERP standard.
- High-purity aluminum material 6063 : surface through anodic oxidation process.
- PC cover material Japan TEIJIN , fire rating VO, light transmittance rate > 88% for milky cover, >95% for clear cover, anti-UV, neither getting yellowing nor brittle.

## Specifications

- Wide power range : 9W - 25W
- Color Rendering Index (CRI) : 85
- IP Rating : IP22
- Lifespan : 50000 hours
- Certifications : CE,RoHS,SAA,DLC



T8 with motion sensor technology



## Applications

- Indoor & outdoor area such as: supermarket, station, office, parking garage, shopping mall, retail, etc.



## Product Features

- 💡 Special design : seamless connection of tubes to form a linear longer tube, no dark spots, no dazzle.
- 💡 High lumen SMD 2835, LM-80 test passed, ANSI and ERP standard.
- 💡 High-purity aluminum material 6063 : surface through anodic oxidation process.
- 💡 PC cover material Japan TEIJIN, fire rating VO, lght transmittance rate > 88% for milky cover, >95% for clear cover, anti-UV, neither getting yellowing nor brittle.

## Specifications

- 💡 Wide power range : 7W - 20W
- 💡 Color Rendering Index (CRI) : 85
- 💡 IP Rating : IP22
- 💡 Lifespan : 50000 hours
- 💡 Certifications : CE,RoHS,SAA,DLC

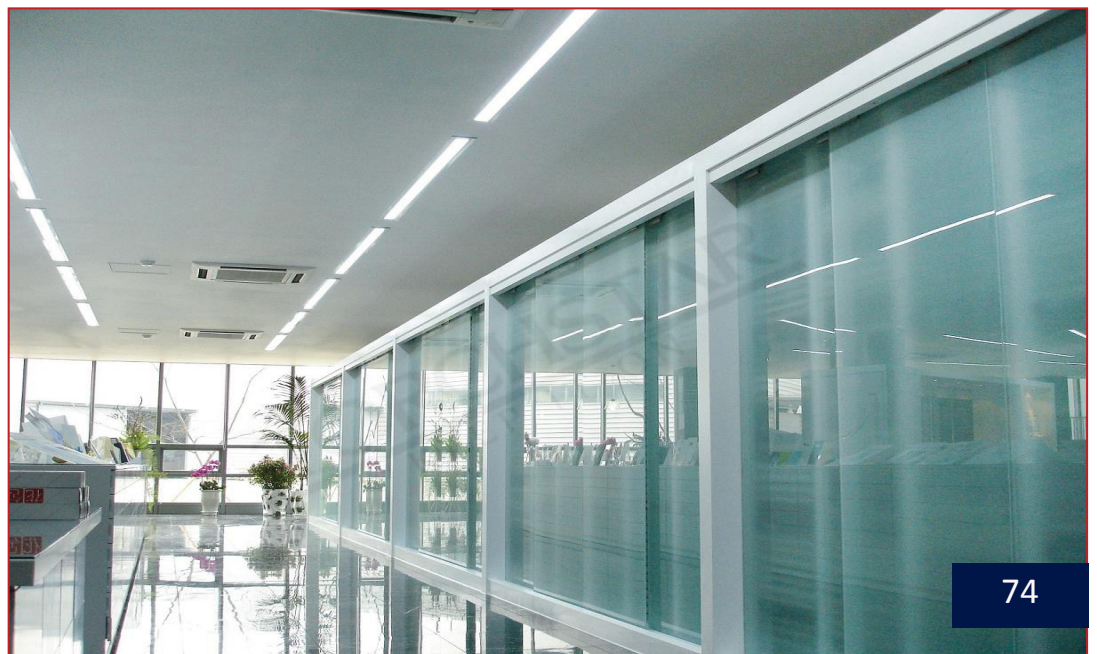


T5 with high quality material



## Applications

- 💡 Indoor & outdoor area such as: supermarket, station, office, parking garage, shopping mall, retail, etc.



# STRIP LIGHT

The use of flexible LED strip lights is rapidly rising in modern lighting design around the world. Architects and lighting designers are implementing LED strip lights into residential, commercial, and industrial projects at an increasing rate. This is due to an increase in efficiency, color options, brightness, and ease of installation.



## Product Features

- ⚡ Sourced by high output 2835 LED with good color conformity.
- ⚡ 99.99% gold thread, pure copper bracket coated with silver.
- ⚡ Double layer rolled copper FPC. 3M 300LSE tape attached.
- ⚡ USA Intematix phosphor.

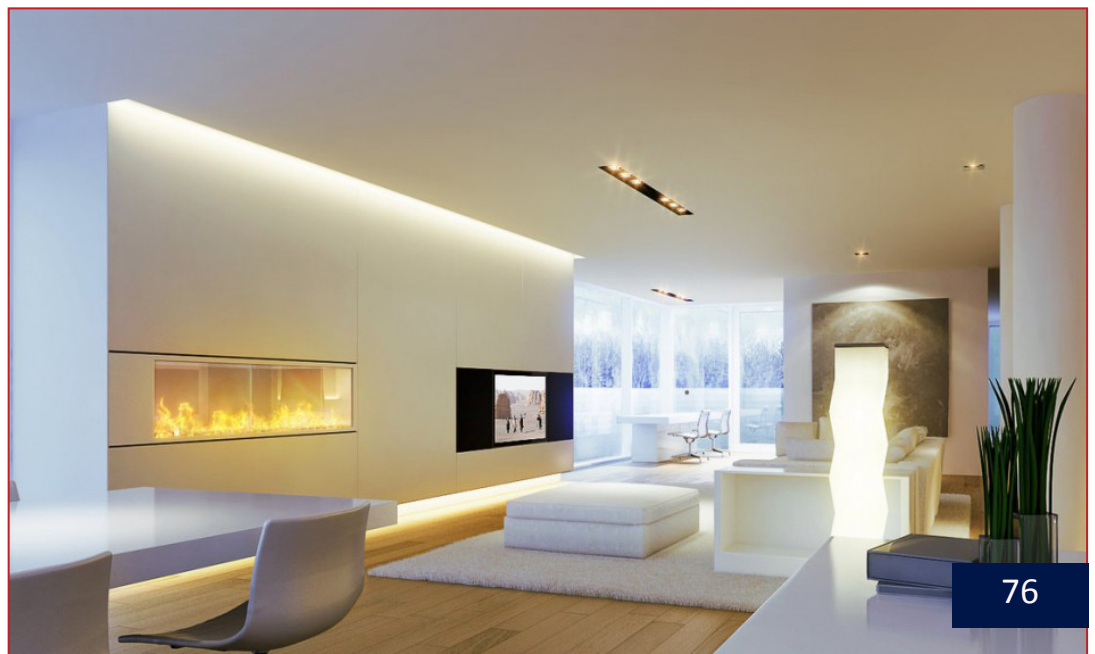
## Specifications

- ⚡ Wide power range : 6W & 12W
- ⚡ Color Rendering Index (CRI) : 75 - 95
- ⚡ IP Rating : IP33 / IP55 / IP65 / IP68
- ⚡ Beam Angle : 120°
- ⚡ Certifications : CE, RoHS, UL



## Applications

- ⚡ City lighting, landscape lighting, commercial lighting and house contour lighting, etc...



## Product Features

- 💡 Sourced by high output SMD2835, good color conformity and no spot.
- 💡 99.99% gold thread, pure copper bracket coated with silver.
- 💡 Special lens design, 160°beaming angle with even light.
- 💡 Overmoulded: anti-dusting, anti-moisture, waterproof, anti-shock.

## Specifications

- 💡 Wide power range : 1W & 1.5W
- 💡 Color Rendering Index (CRI) : 75
- 💡 IP Rating : IP65
- 💡 Beam Angle : 160°
- 💡 Certifications : CE, RoHS, UL



## Applications

- 💡 City lighting, landscape lighting, commercial lighting and house contour lighting, etc...



## Product Features

- 💡 Sourced by high output 2835 LED with good color conformity and high light efficiency 100lm/w.
- 💡 DC24v, constant current design with equal brightness. Over voltage protection. Safe and stable.
- 💡 Max. 20m per roll by one end power supply, and Max. 40m by both ends power supply. Long cascade with more convenient installation and much easier connection.

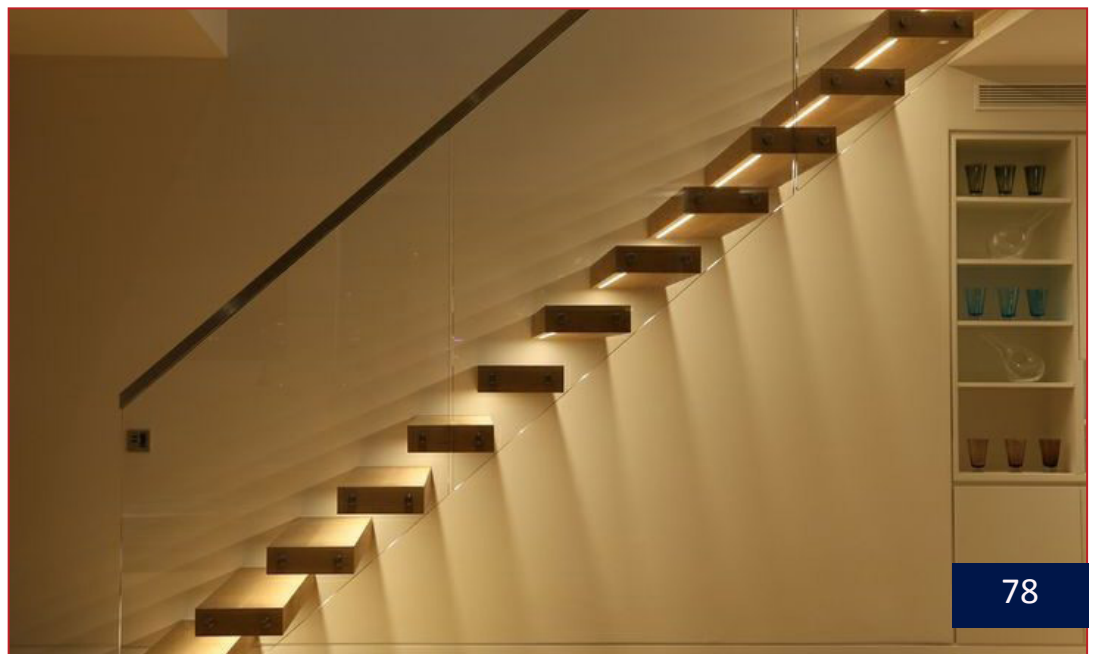
## Specifications

- 💡 Wide power range : 7.2W
- 💡 Color Rendering Index (CRI) : 75 - 95
- 💡 IP Rating : IP33 / IP55 / IP65 / IP68
- 💡 Beam Angle : 120°
- 💡 Certifications : CE, RoHS, UL



## Applications

- 💡 City lighting, landscape lighting, commercial lighting and house contour lighting, etc...



# LANDSCAPE LIGHTING

The perfect combination of lighting can transform an outdoor space into an oasis. Whether you want to highlight stonework, illuminate walkways or draw attention to interesting foliage, explore which techniques work best together for your layout. LIESOL's LED landscape lighting can provide the best lighting technology to achieve exquisite look, reliable function, good safety, also for security, landscape lighting works to provide additional security at night. The right lighting system can illuminate a home's dimly lit spots making for a well-lit outdoor space.





## Product Features

- 💡 Square body with small-middle-big 3 housings, ADC12 die-cast aluminium.
- 💡 Smooth surface with self-clean coating avoid dust pile and offers delicate appearance.
- 💡 Many applications available, can be projector, wall washer, tree projector or wall mounting, etc.
- 💡 Chimney radiating design small housing with big power.

## Specifications

- 💡 Wide power range : 40W - 80W
- 💡 Color Rendering Index (CRI) : 70
- 💡 IP Rating : IP66
- 💡 Beam Angle : 150x150°
- 💡 Certifications : CE



## Applications

- 💡 Gardens, courtyard, parks, pathway, street, bridge, exterior, professional lighting, dock, lawn, etc....



## Product Features

- 💡 Square body with small-middle-big 3 housings, ADC12 die-cast aluminium.
- 💡 Smooth surface with self-clean coating avoid dust pile and offers delicate appearance.
- 💡 Many applications available, can be projector, wall washer, tree projector or wall mounting, etc.
- 💡 Chimney radiating design small housing with big power.

## Specifications

- 💡 Wide power range : 8W - 100W
- 💡 Color Rendering Index (CRI) : 70
- 💡 IP Rating : IP66
- 💡 Beam Angle : 7°, 15°, 25°, 40°, 60°
- 💡 Certifications : CE



## Applications

- 💡 Gardens, courtyard, parks, pathway, street, bridge, exterior, professional lighting, etc....



## Product Features

- 💡 Square body with small-middle-big 3 housings, ADC12 die-cast aluminium.
- 💡 Smooth surface with self-clean coating avoid dust pile and offers delicate appearance.
- 💡 Many applications available, can be projector, wall washer, tree projector or wall mounting, etc.
- 💡 Chimney radiating design small housing with big power.

## Specifications

- 💡 Wide power range : 30W / 60W
- 💡 Color Rendering Index (CRI) : 70
- 💡 IP Rating : IP66
- 💡 CCT : 3000K - 5700K
- 💡 Certifications : CE



## Applications

- 💡 Gardens, courtyard, parks, pathway, street, bridge, exterior, professional lighting, dock, lawn, etc....



# BOLLARD LIGHTING

Bollard lights provide an element of safety for larger outdoor spaces and commercial locations. They're often (though not always) understated landscape lights that offer more illumination than smaller accent or path lights. You can find both the actual fixture and all the parts and accessories for putting them together in this assortment, making it easy to refresh your landscape. From energy efficient LED bollard lights to solar bollard lamps, you'll find just what you need here.



## Product Features

- Unique design and convenient installation.
- LED driver included, frost PC, CREE LEDs.
- Available in 3 colors : sanded black, dark sanded grey, light sanded grey.
- CCT : 3000K, also available for 6000K

## Specifications

- Wide power range : 9W
- Size (L x W x D) : 70 X 120 X 650 mm
- IP Rating : IP54
- Material : Die-cast aluminum
- Certifications : CE



## Applications

- Gardens, courtyard, parks, pathway, street, bridge, exterior, professional lighting, dock, lawn, etc....



## Product Features

- 💡 Unique design and convenient installation.
- 💡 LED driver included, frost PC, CREE LEDs.
- 💡 Available in 3 colors : sanded black, dark sanded grey, light sanded grey.
- 💡 CCT : 3000K, also available for 6000K

## Specifications

- 💡 Wide power range : 9W
- 💡 Size (L x W x D) : 120 x 40 x 650 mm
- 💡 IP Rating : IP54
- 💡 Material : Die-cast aluminum
- 💡 Certifications : CE



## Applications

- 💡 Gardens, courtyard, parks, pathway, street, bridge, exterior, professional lighting, lawn, dock, etc....









LIESOL®



PT. INTEGRASI ENERGI SOLUSINDO

 Jl. Teluk Betung No. 43  
Jakarta 10230, Indonesia

 +62-21-3151747

 info@liesol.com

 www.liesol.com

